



ANGUILLA

National Accounts Statistics Report

2007

for the year ended 31 December 2007

Prepared by:

Anguilla Statistics Department,
Ministry of Finance and Economic Development, Investment, Commerce and Tourism

July 2008

Anguilla Statistics Department

The information disseminated in this report for 2007 is preliminary and based on data presently available. The estimates for 2006 are now final.

This report is a product of the Anguilla Statistics Department. Users may utilise the content of this report without formal permission but the source should be acknowledged.

Should you have any queries or comments please feel free to contact us.

For more statistics relating to Anguilla please browse our website.

ADDRESS

Office: P.O. Box 60
The Old Court House Bldg
The Valley
Anguilla
British West Indies

Telephone: (264) 497- 5731 or (264) 497- 2451 ext 2871
Facsimile: (264) 497- 3986
E-mail: statistics@gov.ai
Website: <http://gov.ai/statistics>

Table of Contents

List of Statistical Tables.....	iv
List of Statistical Charts.....	v
Preface.....	vi
Definitions.....	vii
Review of Economic Activity.....	1
1. Overview.....	1
2. Sector Review	3

List of Statistical Tables

Table 1. 1- Output per capita	2
Table 1 - Gross Domestic Product by Economic Activity, at Basic Prices in Current Prices(EC\$ MILLION)	8
Table 2 - Gross Domestic Product by Economic Activity, at Basic Prices in Constant 1990 Prices (EC\$ MILLION)	9
Table 3 - Percentage Contribution of Gross Domestic Product by Economic Activity at Basic Prices in Current Prices.....	10
Table 4 - Percentage Contribution of Gross Domestic Product by Economic Activity at Basic Prices in Constant 1990 Prices.....	11
Table 5 - Rate of Growth of Gross Domestic Product by Economic Activity at Basic Prices in Current Prices.....	12
Table 6 - Rate of Growth of Gross Domestic Product by Economic Activity at Basic Prices in Constant Prices.....	13
Table 7 - Gross Domestic Product Price Deflators by Economic Activity at Basic Prices in Constant 1990 Prices (EC\$ MILLION).....	14
Table 8 - Percentage Change in GDP Price Deflators by industry Sector.....	15
Table 9 - Index of Gross Domestic Product by Economic Activity at Basic Prices in Current Prices (1990 =100).....	16
Table 10 - Index of Gross Domestic Product by Economic Activity at Basic Prices in Constant 1990 Prices (1990=100).....	17
Table 11 - Current Account of Central Government Revenue (EC \$'000).....	18
Table 12 - Current Account of Central Government Expenditure (EC\$'000)	19
Table 13 - Current Account of Departmental Enterprises (EC\$'000).....	20
Table 14 - Rate of Growth of Central Government Recurrent Revenue	21
Table 15 - Rate of Growth of Central Government Recurrent Expenditure.....	22
Table 16 - Rate of Growth of Departmental Enterprises	23
Table 17 - Current Account Revenue of Central Government as a Percentage of GDP	24
Table 18- Current Account of Central Government Expenditure as a Percentage of GDP	25
Table 19 - Income and Outlay Account of Central Government at Current Prices (EC \$'000)	26
Table 20 - Selected Economic Indicators	27

List of Statistical Charts

Chart 1 - Annual Estimate of GDP	1
Chart 2 - Annual Growth Rate of GDP.....	2
Chart 3 - Major components of GDP in current prices: 2006 and 2007	3
Chart 4 - Hotels and Restaurants GDP contribution: 1992- 2007	4
Chart 5 - Hotel and Restaurant Contribution and Visitor Arrivals	4
Chart 6 - Construction GDP contribution: 1992- 2007.....	5
Chart 7 - Output per worker in the Construction Sector: 1994-2007	6
Chart 8 - Government Services GDP Contribution: 1992- 2007	7
Chart 9 - Banks and Insurance GDP Contribution: 1992- 2007	7

Preface

The National Accounts statistics report is published every year by the Statistics Department of the Ministry of Finance, Economic Development, Investment, Commerce and Tourism in collaboration with the Eastern Caribbean Central Bank. This publication is based on the reported returns of businesses within the various sectors of Anguilla from self-completed questionnaires distributed by the Statistics Department. Tables are prepared and revised each year by officers within the Statistics Department.

We would like to take this opportunity to thank all those business people who took time out to complete and return the survey questionnaires mailed to them. Without their co-operation it would be impossible to produce this publication. We would also like to thank the Eastern Caribbean Central Bank for their assistance in compiling these tables and to **all** the staff of the Statistics Department, with special mention Mr. Careme Carty and Ms. Rhina Meade.

As the economy of Anguilla develops and grows, there is a greater need for more reliable, accurate and timely economic statistics. These statistics can only be prepared with the support of the private and public sectors, to develop reliable and accurate data on the economy. We therefore solicit your continued future commitment to assist us in producing data for you.

The primary users of this information are the Eastern Caribbean Central Bank and planners within the public and private sectors. We hope that the information contained in this publication will benefit the economic and social planners as well as private sector individuals and businesses in their decision-making. Any suggestions that may assist us in improving the quality and content of future publications are welcome.

Lori-Rae Alleyne-Franklin
Chief Statistician

July 2008

Definitions

Gross Domestic Product (GDP) - is the value of all goods and services produced in a specified period of time in Anguilla.

GDP in Current Prices- measures output valued at current dollar value (not adjusted for inflation).

GDP in Constant Prices- measures the value of output at prices for another year (base year 1990) to exclude the impact of changing prices.

Output per capita- equals GDP divided by population.

Growth- steady increase in aggregate output over time.

Industrial Sectors- is the structure used for classification of activities. It includes:

Agriculture- all activities related to farming of crops, livestock and fishing and incidental services.

Mining and Quarrying- includes extracting minerals occurring naturally and activities aimed at preparing the crude materials for marketing.

Electricity and Water- covers the activity of providing electric power and water supply through a permanent infrastructure (network) of lines, mains and pipes.

Construction- covers general construction and special trade construction for buildings and civil engineering, building installation and building completion. It includes new work, repair, additions and alterations, the erection of prefabricated buildings or structures on the site and also construction of a temporary nature.

Wholesale and Retail- includes wholesale and retail sale of any type of goods, and rendering services incidental to the sale of merchandise.

Hotels and Restaurants- includes both accommodation and food services; there may be overlap in activities in this component.

Transport- covers activities related to providing passenger or freight transport, whether scheduled or not, by road, water or air.

Communications- includes postal activities and telecommunication.

Banks and Insurance- includes all units primarily engaged in financial transactions and those in insurance and pension funding.

Real Estate and Housing- covers buying, selling, renting and operating real estate that is, apartment buildings and dwellings, non-residential buildings and land.

Government Services- includes general administration and supervision in the field of social and economic life, defence, justice, police, foreign affairs etc. and management of social security scheme.

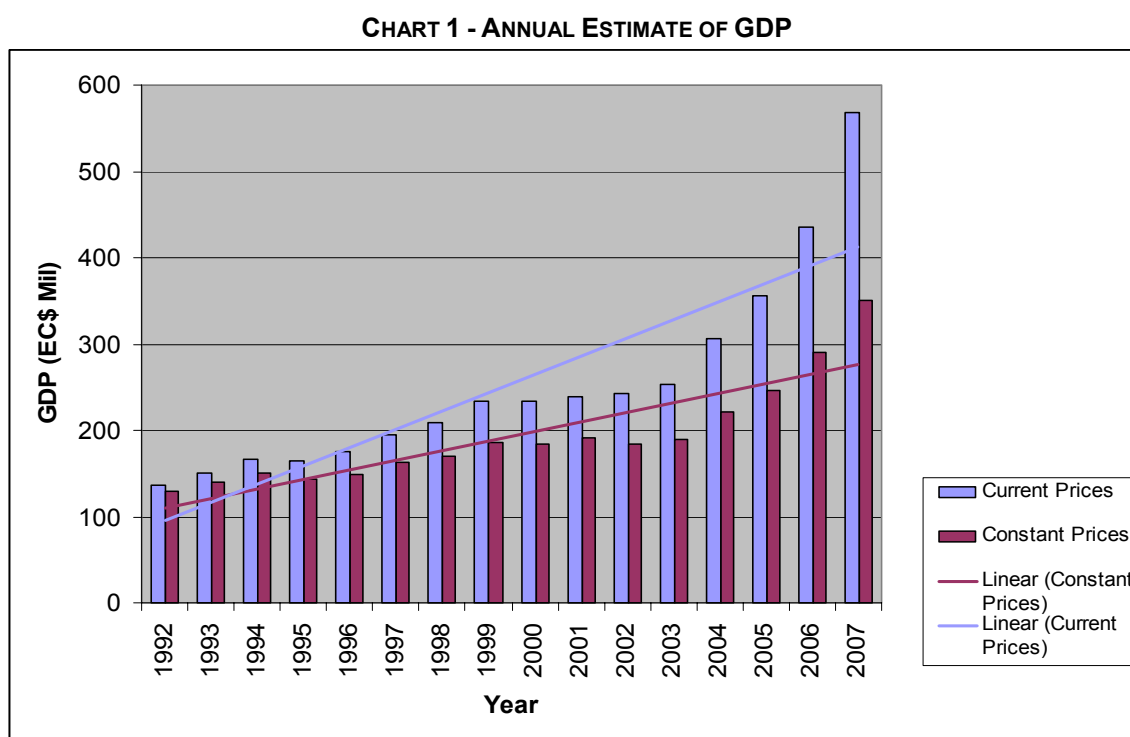
Other Services- includes services provided by businesses to individuals, other businesses or the community as a whole.

Review of Economic Activity

1. Overview

The annual estimate of GDP in current prices was EC\$588.81 million¹, an increase of 30.6% on the total in 2006. The measure of real economic activity in Anguilla using 1990 dollars was estimated to be EC\$351.05 million², an increase by 21.0% from the GDP in constant prices in 2006.

From Chart 1, looking at the linear trend line of GDP, there has been a steady increase in output from the Anguilla economy since 1992.

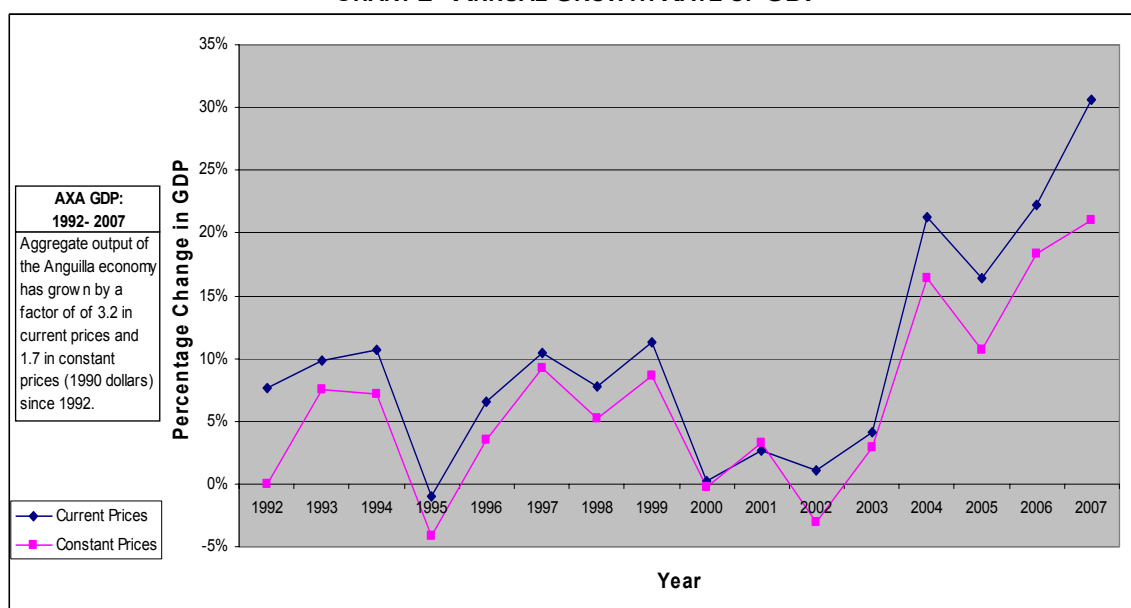


Source: Anguilla Statistics Department

¹ Table 1 - Gross Domestic Product by Economic Activity, at Basic Prices in Current Prices(EC\$ MILLION)

² Table 2 - Gross Domestic Product by Economic Activity, at Basic Prices in Constant 1990 Prices (EC\$ MILLION)

CHART 2 - ANNUAL GROWTH RATE OF GDP



Source: Anguilla Statistics Department

The deficit of trade in goods and services has widened to EC\$644.54 million³ compared with the deficit of EC\$439.19 million in 2006. The value of exports was down by 24.9% to EC\$24.80 million. Anguilla's low goods production means that the economy does not have the ability to meet demand, with the ongoing expansion of the economy the country has to import more, thus causing the trade deficit to be even larger. The value of imports increased by 41.7% to EC\$669.34 million this year.

From Table 1.1, it can be seen that the standard of living in recent years, 2003-2006 has increased with positive annual growth in output per capita of about 7% per year. Real output per capita has increased by a factor of 0.47 since 1998. The output per capita for 2007 is EC\$23,583.32⁴

TABLE 1. 1 - OUTPUT PER CAPITA

Year		1999-2002	2003-2006	2007
Average Annual Growth Rate Output per capita	Current Prices	0.01	0.11	0.25
	Constant Prices	(0.01)	0.07	0.16
Year		1998	2003	2007
Real Output per capita	(1990 dollars)	15,993.62	15,585.57	23,583.32
	1998/2007	0.47		

Source: Anguilla Statistics Department

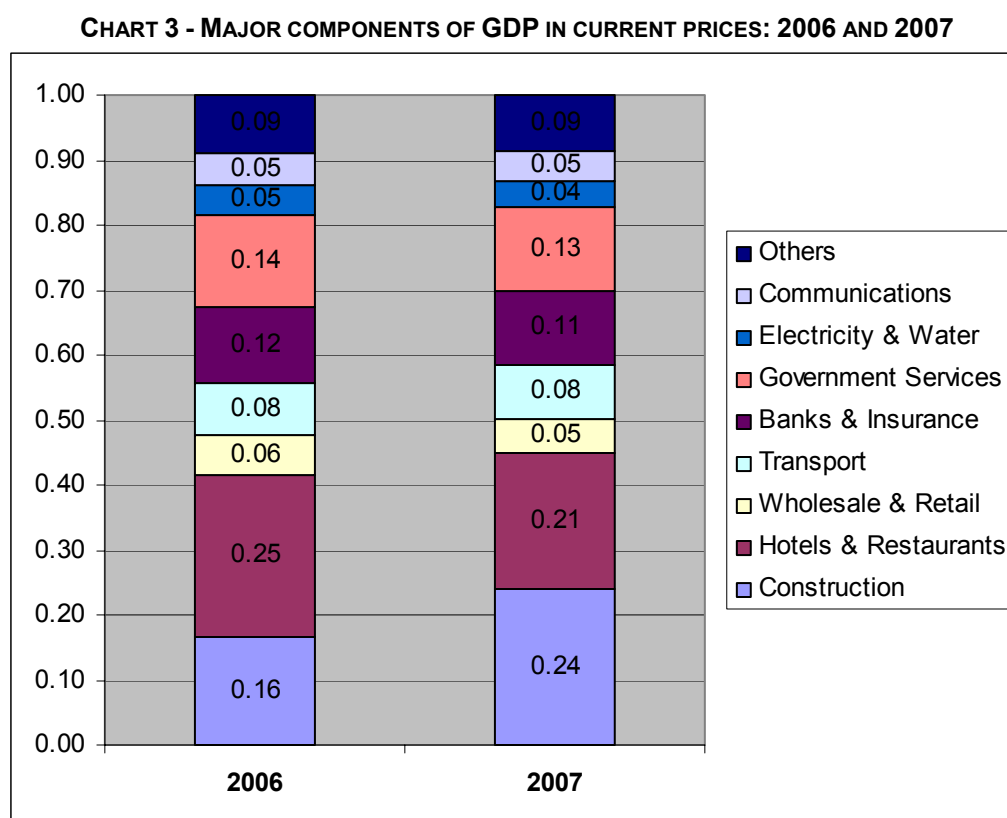
³ Table 20 - Selected Economic INDICATORS

⁴ Table 20 - Selected Economic INDICATORS

2. Sector Review

Four of the stronger industrial sectors that helped to fuel the growth of the economy for 2007, in order of contribution to GDP, were: Construction; Hotels and Restaurants; Government Services; and Banks and Insurance. The following sections examine the trends of these four sectors of GDP. The annual estimate for Hotels and Restaurants in previous years was the highest contributor to GDP; however, the ranking has slightly changed in 2007 with Construction being the highest contributor in both current and constant dollars. The increased activity in this sector can be associated with tourism related activity investments.

Chart 3 below shows the approximate contribution of the components of GDP by industrial sectors. The percentage contribution of each sector can be found in Table 3.



Source: Anguilla Statistics Department

HOTELS AND RESTAURANTS

The Hotels and Restaurants sector is one of the consistently strong sectors in the Anguilla economy. Looking at the series 1992-2007 for current prices, this sector has had an unprecedented low in the percentage contribution of 22.6%⁵ to total GDP. Compared to the three earlier years, the rate of growth has also slowed, with the sector expanding by 7.5%⁶ this year. The dollar contribution was an estimated EC\$128.53 million⁷.

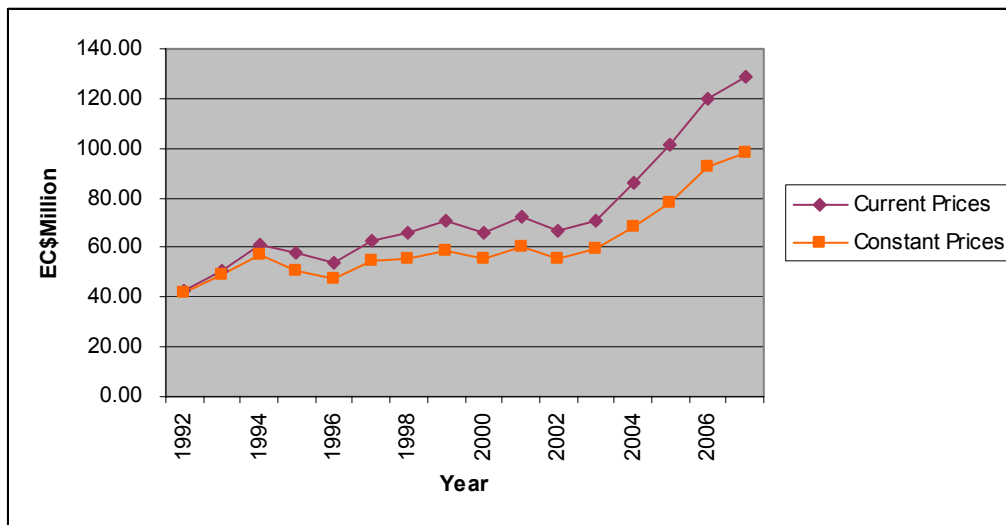
⁵ Table 3 - Percentage Contribution of Gross Domestic Product by Economic Activity at Basic Prices in Current PRICES

⁶ Table 5 - Rate of Growth of Gross Domestic Product by Economic Activity at Basic Prices in Current PRICES

⁷ Table 1 - Gross Domestic Product by Economic Activity, at Basic Prices in Current Prices(EC\$ MILLION)

The contribution of this sector, in constant prices, to the estimate for GDP is EC\$98.10 million⁸, an increase by 6.4%⁹ over 2006 estimate.

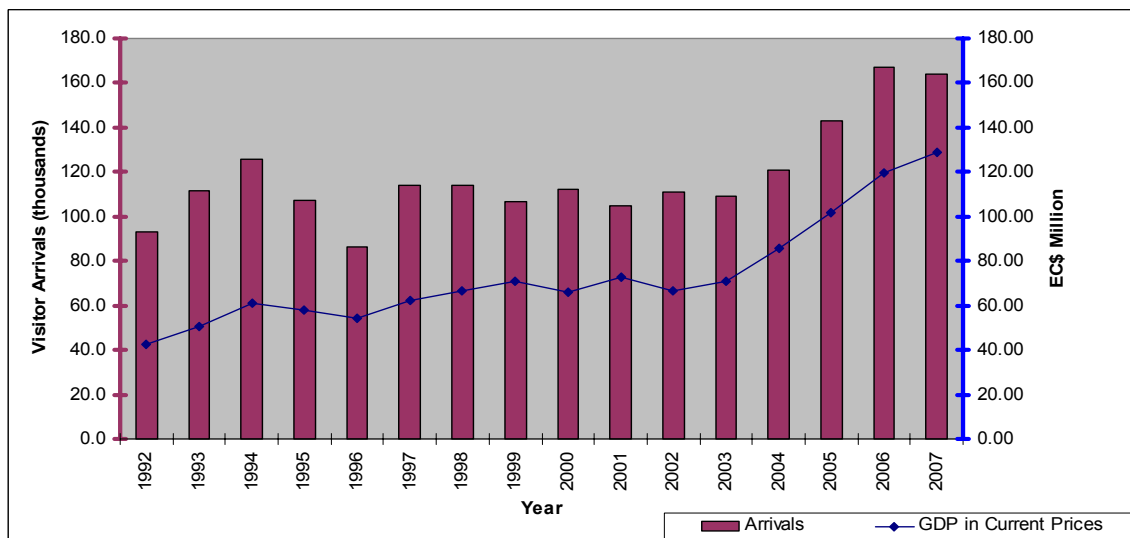
CHART 4 - HOTELS AND RESTAURANTS GDP CONTRIBUTION: 1992- 2007



Source: Anguilla Statistics Department

Visitor arrivals for both tourist and excursionists fell in 2007 over its corresponding 2006 figure. The possible effect of lower visitor arrivals can be seen in the slowed rate of growth for 2007.

CHART 5 - HOTEL AND RESTAURANT CONTRIBUTION AND VISITOR ARRIVALS



Source: Anguilla Statistics Department

⁸ Table 2 - Gross Domestic Product by Economic Activity, at Basic Prices in Constant 1990 Prices (EC\$ MILLION)

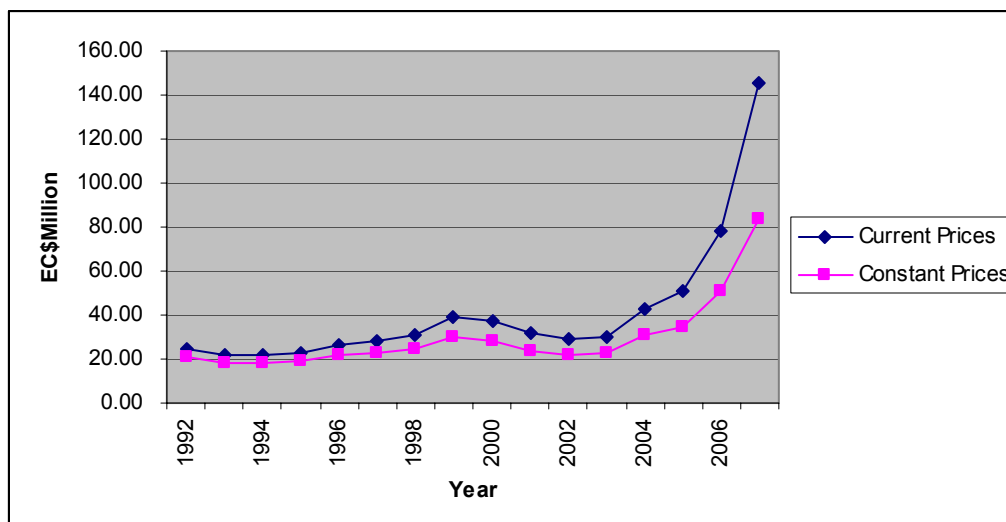
⁹ Table 6 - Rate of Growth of Gross Domestic Product by Economic Activity at Basic Prices in Constant PRICES

CONSTRUCTION

The Construction sector as mentioned earlier was a key driver of the economy for 2007 with many private, government and household projects undertaken. Looking at the GDP in current prices, this sector had a 25.6%¹⁰ contribution to the annual estimate of GDP with an output of EC\$145.74 million¹¹, an increase by 86.6%¹² when compared to 2006.

In constant prices, the GDP was moderated with an estimate of EC\$83.97 million¹³ an annual increase by 65.7%¹⁴. This sector accounted for a percentage contribution of 23.9%¹⁵ of the aggregate output for the economy.

CHART 6 - CONSTRUCTION GDP CONTRIBUTION: 1992- 2007



Source: Anguilla Statistics Department

Employment levels in the Construction sector are estimated using the number of work permits issued by occupational class in the Production, Construction, and Transport occupation group.

Work permits issued to this group more than tripled in 2007 increasing by a factor of 3.40. The number of registered construction employees is also used as an estimate; it includes Anguillians, Belongers and individuals requiring work permits. Both sources suffer from under reporting and under coverage. Using these measurements to show the trend in output per worker, it can be seen that there is a downward trend in output per worker in the construction sector.

¹⁰ Table 3 - Percentage Contribution of Gross Domestic Product by Economic Activity at Basic Prices in Current PRICES

¹¹ Table 1 - Gross Domestic Product by Economic Activity, at Basic Prices in Current Prices(EC\$ MILLION)

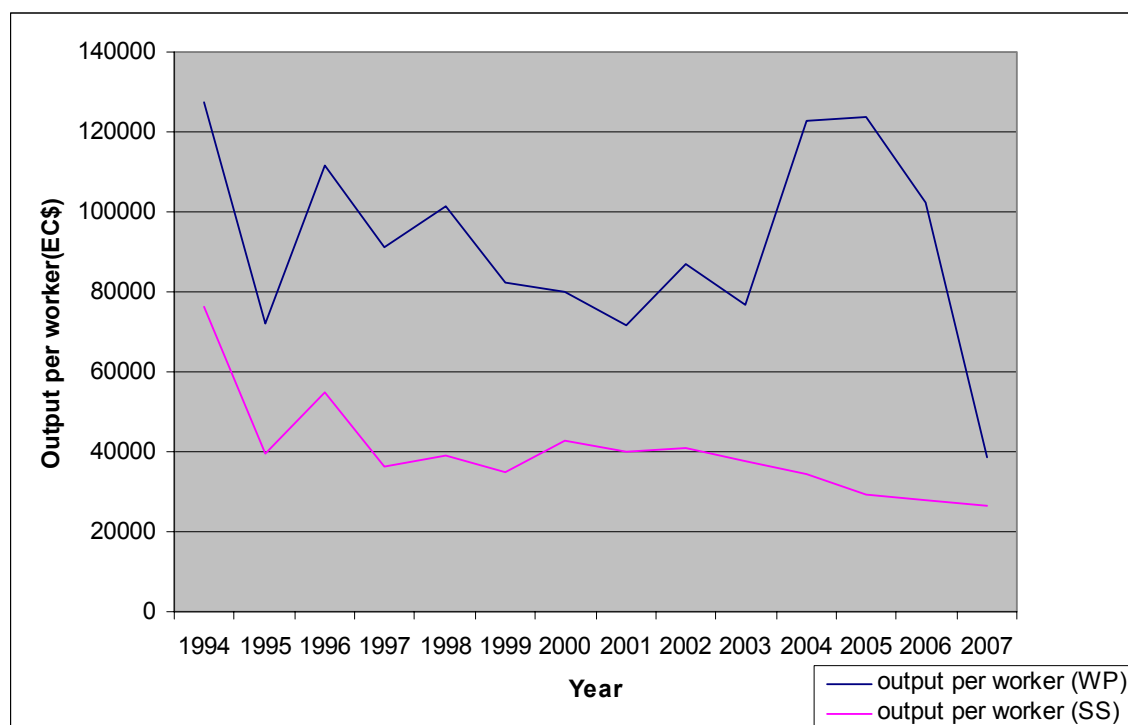
¹² Table 5 - Rate of Growth of Gross Domestic Product by Economic Activity at Basic Prices in Current PRICES

¹³ Table 2 - Gross Domestic Product by Economic Activity, at Basic Prices in Constant 1990 Prices (EC\$ MILLION)

¹⁴ Table 6 - Rate of Growth of Gross Domestic Product by Economic Activity at Basic Prices in Constant PRICES

¹⁵ Table 4 - Percentage Contribution of Gross Domestic Product by Economic Activity at Basic Prices in Constant 1990 PRICES

CHART 7 - OUTPUT PER WORKER IN THE CONSTRUCTION SECTOR: 1994-2007



Source: Anguilla Statistics Department

Note: output per worker (WP)- uses work permit issued for employment levels
output per worker (SS)- uses employees registered with Social Security for employment levels

GOVERNMENT SERVICES

There has been stronger domestic spending by government, with total expenditure up 11.9% to EC\$ 140,886 thousand. Total recurrent revenue also increased, and was up 15.0% to EC\$175,476 thousand. For the period, 1998-2007, this year was the first year that Departmental Enterprises registered a surplus at EC\$228 thousand.

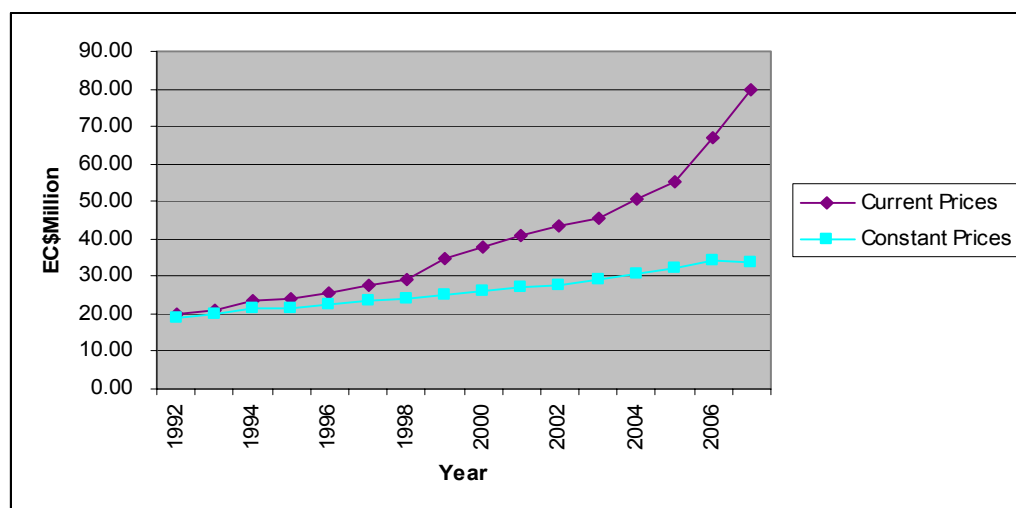
In current prices, the Government Services sector made a dollar value contribution of EC\$79.72 million, an increase by 18.8%.

However, in real terms (constant 1990 dollars) output for this sector, EC\$33.97 million¹⁶, declining by 1.1%¹⁷; it was the only sector to experience negative growth for 2007.

¹⁶ Table 2 - Gross Domestic Product by Economic Activity, at Basic Prices in Constant 1990 Prices (EC\$ MILLION)

¹⁷ Table 6 - Rate of Growth of Gross Domestic Product by Economic Activity at Basic Prices in Constant PRICES

CHART 8 - GOVERNMENT SERVICES GDP CONTRIBUTION: 1992- 2007



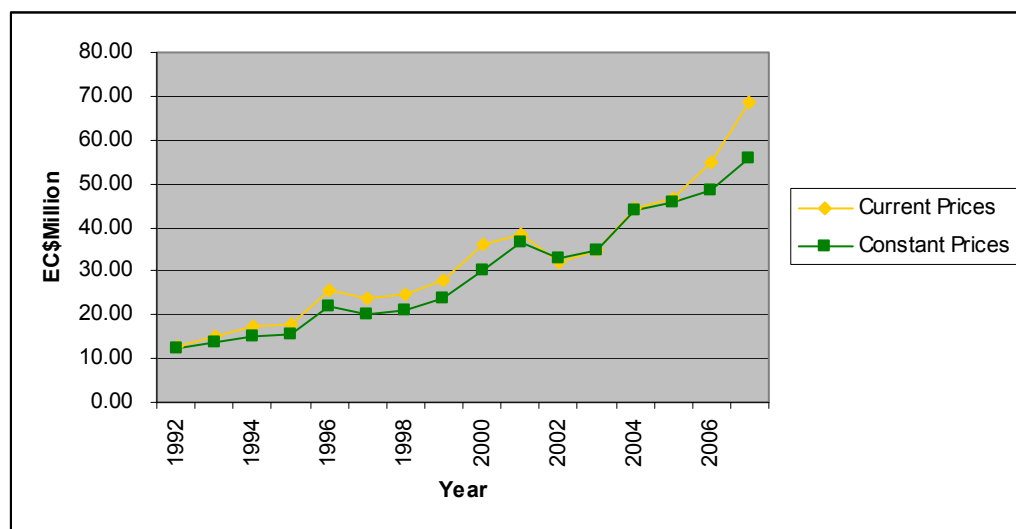
Source: Anguilla Statistics Department

BANKS AND INSURANCE

This sector has continued to expand and at a strong pace, looking at its contribution to GDP in current prices of EC\$64.42 million, this sector had a rate of growth of 24.9%¹⁸.

There is not a great disparity between current and constant prices in this sector, with a contribution of EC\$55.55 million towards the GDP estimate in constant prices. The rate of growth was measured to be 15.0%.

CHART 9 - BANKS AND INSURANCE GDP CONTRIBUTION: 1992- 2007



Source: Anguilla Statistics Department

OTHER SECTORS

Overall, the other sectors not reviewed in this report performed well, with all having positive growth rates. The Mining and Quarrying sector had the greatest improvement in performance with a growth rate of 50.1%.

¹⁸ Table 5 - Rate of Growth of Gross Domestic Product by Economic Activity at Basic Prices in Current PRICES

ANGUILLA
TABLE 1 - GROSS DOMESTIC PRODUCT BY ECONOMIC ACTIVITY, AT BASIC PRICES IN CURRENT PRICES(EC\$ MILLION)

INDUSTRIAL SECTORS	1992	1993	1994	1995	1996	1997	1998	1999	2000	2001	2002	2003	2004	2005	2006	2007
Agriculture	6.04	6.04	7.17	6.43	7.06	7.37	7.94	7.03	6.50	6.20	7.10	7.23	7.76	8.05	8.44	9.09
Crops	0.30	0.30	0.57	0.38	0.28	0.35	0.50	0.39	0.57	0.70	0.71	0.58	0.61	0.51	0.72	0.77
Livestock	1.62	1.62	2.03	2.17	2.07	2.17	2.30	2.01	1.77	1.22	2.02	1.75	1.76	1.61	1.62	1.65
Fishing	4.12	4.12	4.57	3.88	4.71	4.85	5.14	4.63	4.16	4.28	4.37	4.90	5.39	5.93	6.11	6.67
Mining & Quarrying	1.17	1.17	1.15	1.32	1.78	1.96	2.12	2.35	2.50	2.25	2.17	3.50	4.73	5.68	8.36	12.55
Manufacturing	1.15	1.20	1.27	1.33	1.58	1.64	1.88	3.15	3.26	3.40	3.54	4.03	3.18	7.96	8.89	12.08
Electricity & Water	3.97	5.58	5.79	4.29	5.61	7.17	8.14	9.73	7.92	10.62	15.16	13.80	15.47	19.22	22.07	23.92
Construction	24.77	21.45	21.45	23.17	26.70	28.61	30.98	39.47	36.82	31.44	28.78	29.71	43.16	51.25	78.10	145.74
Wholesale & Retail	9.14	10.11	10.92	13.51	14.02	15.05	16.58	17.76	19.53	18.97	17.31	19.02	20.86	23.67	27.91	32.10
Hotels & Restaurants	42.31	50.77	60.76	57.72	54.26	62.49	66.34	70.75	66.22	72.51	66.50	70.95	85.73	101.74	119.56	128.53
Transport	9.11	10.35	11.18	11.06	11.24	12.87	13.88	14.47	15.13	15.09	15.56	17.11	22.58	28.03	38.58	50.55
Road Transport	4.86	5.40	5.55	4.99	5.43	5.77	6.28	6.58	6.64	6.06	6.02	6.53	10.06	14.28	21.97	31.40
Sea Transport	3.16	3.69	4.17	4.27	3.99	4.83	5.24	5.45	5.93	5.91	6.27	6.79	8.68	9.41	10.68	12.78
Air Transport	1.09	1.26	1.46	1.80	1.82	2.27	2.36	2.44	2.56	3.12	3.27	3.79	3.84	4.34	5.93	6.37
Communications	9.54	11.04	12.93	12.91	14.12	18.05	18.51	19.82	21.51	20.65	22.51	20.26	26.30	29.75	23.32	29.06
Banks & Insurance	12.61	15.25	17.31	17.88	25.46	23.63	24.87	28.02	35.93	38.37	32.05	34.87	44.54	46.83	54.80	68.42
Real Estate & Housing	6.22	6.36	6.52	6.32	6.84	7.04	7.43	7.54	7.69	8.02	8.27	8.46	8.61	8.78	9.22	9.79
Government Services	19.78	21.00	23.50	24.00	25.62	27.70	29.08	34.85	37.73	40.73	43.59	45.59	50.81	55.10	67.12	79.72
Other Services	2.41	2.56	2.73	2.84	3.03	3.48	3.74	4.07	4.68	5.02	5.30	6.90	6.72	7.14	7.85	8.60
Less Imputed Service Charge	11.28	12.49	16.23	17.91	21.57	22.88	22.26	26.06	31.91	33.49	25.48	29.01	34.36	36.79	38.62	41.33
TOTAL	136.94	150.39	166.45	164.87	175.75	194.18	209.23	232.95	233.51	239.78	242.36	252.42	306.09	356.41	435.60	568.81
GROWTH RATE	7.7%	9.8%	10.7%	-0.9%	6.6%	10.5%	7.7%	11.3%	0.2%	2.7%	1.1%	4.1%	21.3%	16.4%	22.2%	30.6%

Source: Anguilla Statistics Department / ECCB

ANGUILLA
Table 2 - GROSS DOMESTIC PRODUCT BY ECONOMIC ACTIVITY, AT BASIC PRICES IN CONSTANT 1990 PRICES (EC\$ MILLION)

INDUSTRIAL SECTORS	1992	1993	1994	1995	1996	1997	1998	1999	2000	2001	2002	2003	2004	2005	2006	2007
Agriculture	6.34	5.78	6.53	5.80	5.83	6.13	6.57	5.82	5.37	5.09	5.86	5.95	6.37	6.50	6.83	7.12
Crops	0.26	0.25	0.48	0.31	0.23	0.32	0.41	0.32	0.46	0.55	0.57	0.47	0.48	0.44	0.62	0.65
Livestock	1.36	1.39	1.74	1.83	1.75	1.84	1.95	1.71	1.50	1.03	1.71	1.47	1.48	1.35	1.36	1.38
Fishing	4.72	4.14	4.31	3.66	3.85	3.97	4.21	3.79	3.41	3.51	3.58	4.01	4.41	4.71	4.85	5.09
Mining & Quarrying	1.12	0.95	0.93	1.07	1.33	1.46	1.62	1.77	1.88	1.69	1.63	2.63	3.55	4.08	5.55	8.33
Manufacturing	1.09	1.14	1.18	1.26	1.30	1.34	1.47	2.35	2.43	2.48	2.51	2.75	2.07	5.02	5.47	7.05
Electricity & Water	2.88	3.87	4.04	3.67	3.12	3.91	4.29	5.16	5.59	6.42	7.01	7.28	7.77	8.96	10.28	11.08
Construction	21.14	17.98	17.98	19.06	21.97	22.85	24.68	29.92	27.91	23.83	21.82	22.52	31.16	34.42	50.67	83.97
Wholesale & Retail	8.53	9.10	9.50	11.57	11.59	12.37	13.30	13.97	14.43	13.71	12.23	12.95	13.52	14.87	17.02	18.57
Hotels & Restaurants	41.95	49.25	57.16	50.39	47.37	54.55	55.42	59.10	55.32	60.57	55.54	59.27	68.20	78.43	92.17	98.10
Transport	8.10	8.76	9.30	8.47	8.18	9.29	9.82	9.93	9.77	9.42	8.98	9.24	10.96	12.19	15.40	19.78
Road Transport	4.49	4.65	4.78	4.30	4.52	4.72	5.14	5.25	4.91	4.78	4.38	4.60	5.99	6.99	9.25	12.59
Sea Transport	2.78	3.15	3.46	3.21	2.71	3.52	3.69	3.68	3.85	3.58	3.59	3.68	4.16	4.34	5.03	6.05
Air Transport	0.83	0.96	1.06	0.96	0.95	1.05	0.99	1.00	1.01	1.06	1.01	0.96	0.81	0.86	1.12	1.14
Communications	11.18	12.95	13.28	13.39	14.51	18.58	18.86	22.52	24.57	23.51	25.27	22.82	28.22	30.77	30.49	36.16
Banks & Insurance	12.13	13.66	15.04	15.53	21.88	20.03	21.22	23.98	30.15	36.78	32.90	34.97	43.99	45.49	48.30	55.55
Real Estate & Housing	5.49	5.62	5.76	5.58	5.83	6.00	6.18	6.24	6.34	6.47	6.67	6.83	6.95	7.09	7.30	7.59
Government Services	18.70	19.82	21.28	21.44	22.54	23.43	24.19	24.86	25.84	26.95	27.81	29.09	30.81	31.98	34.35	33.97
Other Services	2.25	2.31	2.38	2.44	2.52	2.88	3.02	3.21	3.47	3.64	3.73	4.68	4.34	4.47	4.92	5.11
Less Imputed Service Charge	10.93	11.51	14.72	16.24	19.55	20.74	20.18	23.62	28.39	29.80	27.08	30.83	36.52	39.10	38.62	41.33
TOTAL	129.97	139.68	149.64	143.43	148.42	162.08	170.46	185.21	184.68	190.76	184.88	190.14	221.39	245.17	290.13	351.05
GROWTH RATE	0.0%	7.5%	7.1%	-4.1%	3.5%	9.2%	5.2%	8.7%	-0.29%	3.3%	-3.1%	2.8%	16.4%	10.7%	18.3%	21.0%

Source: Anguilla Statistics Department / ECCB

N.B. Revision was done to 2003 figures

ANGUILLA
TABLE 3 - PERCENTAGE CONTRIBUTION OF GROSS DOMESTIC PRODUCT BY ECONOMIC ACTIVITY AT BASIC PRICES IN CURRENT PRICES

INDUSTRIAL SECTORS	1992	1993	1994	1995	1996	1997	1998	1999	2000	2001	2002	2003	2004	2005	2006	2007
Agriculture	4.4	4.0	4.3	3.9	4.0	3.8	3.8	3.0	2.8	2.6	2.9	2.9	2.5	2.3	1.9	1.6
Crops	0.2	0.2	0.3	0.2	0.2	0.2	0.2	0.2	0.2	0.3	0.3	0.2	0.2	0.1	0.2	0.1
Livestock	1.2	1.1	1.2	1.3	1.2	1.1	1.1	0.9	0.8	0.5	0.8	0.7	0.6	0.5	0.4	0.3
Fishing	3.0	2.7	2.7	2.4	2.7	2.5	2.5	2.0	1.8	1.8	1.8	1.9	1.8	1.7	1.4	1.2
Mining & Quarrying	0.9	0.8	0.7	0.8	1.0	1.0	1.0	1.0	1.1	0.9	0.9	1.4	1.5	1.6	1.9	2.2
Manufacturing	0.8	0.8	0.8	0.8	0.9	0.8	0.9	1.4	1.4	1.4	1.5	1.6	1.0	2.2	2.0	2.1
Electricity & Water	2.9	3.7	3.5	2.6	3.2	3.7	3.9	4.2	3.4	4.4	6.3	5.5	5.1	5.4	5.1	4.2
Construction	18.1	14.3	12.9	14.1	15.2	14.7	14.8	16.9	15.8	13.1	11.9	11.8	14.1	14.4	17.9	25.6
Wholesale & Retail	6.7	6.7	6.6	8.2	8.0	7.8	7.9	7.6	8.4	7.9	7.1	7.5	6.8	6.6	6.4	5.6
Hotels & Restaurants	30.9	33.8	36.5	35.0	30.9	32.2	31.7	30.4	28.4	30.2	27.4	28.1	28.0	28.5	27.4	22.6
Transport	6.7	6.9	6.7	6.7	6.4	6.6	6.6	6.2	6.5	6.3	6.4	6.8	7.4	7.9	8.9	8.9
Road Transport	3.5	3.6	3.3	3.0	3.1	3.0	3.0	2.8	2.8	2.5	2.5	2.6	3.3	4.0	5.0	5.5
Sea Transport	2.3	2.5	2.5	2.6	2.3	2.5	2.5	2.3	2.5	2.5	2.6	2.7	2.8	2.6	2.5	2.2
Air Transport	0.8	0.8	0.9	1.1	1.0	1.2	1.1	1.0	1.1	1.3	1.3	1.5	1.3	1.2	1.4	1.1
Communications	7.0	7.3	7.8	7.8	8.0	9.3	8.8	8.5	9.2	8.6	9.3	8.0	8.6	8.3	5.4	5.1
Banks & Insurance	9.2	10.1	10.4	10.8	14.5	12.2	11.9	12.0	15.4	16.0	13.2	13.8	14.6	13.1	12.6	12.0
Real Estate & Housing	4.5	4.2	3.9	3.8	3.9	3.6	3.6	3.2	3.3	3.3	3.4	3.4	2.8	2.5	2.1	1.7
Government Services	14.4	14.0	14.1	14.6	14.6	14.3	13.9	15.0	16.2	17.0	18.0	18.1	16.6	15.5	15.4	14.0
Other Services	1.8	1.7	1.6	1.7	1.7	1.8	1.8	1.7	2.0	2.1	2.2	2.7	2.2	2.0	1.8	1.5
Less Imputed Service Charge service charge	8.2	8.3	9.8	10.9	12.3	11.8	10.6	11.2	13.7	14.0	10.5	11.5	11.2	10.3	8.9	7.3
TOTAL	100	100	100	100	100	100	100	100	100	100	100	100	100	100	100	100

Source: Anguilla Statistics Department / ECCB

N.B. Revision was done to 2003 figures

ANGUILLA
Table 4 - PERCENTAGE CONTRIBUTION OF GROSS DOMESTIC PRODUCT BY ECONOMIC ACTIVITY AT BASIC PRICES IN CONSTANT 1990 PRICES

INDUSTRIAL SECTORS	1992	1993	1994	1995	1996	1997	1998	1999	2000	2001	2002	2003	2004	2005	2006	2007
Agriculture	4.9	4.1	4.4	4.0	3.9	3.8	3.9	3.1	2.9	2.7	3.2	3.1	2.88	2.65	2.35	2.03
Crops	0.2	0.2	0.3	0.2	0.2	0.2	0.2	0.2	0.2	0.3	0.3	0.2	0.22	0.18	0.21	0.18
Livestock	1.0	1.0	1.2	1.3	1.2	1.1	1.1	0.9	0.8	0.5	0.9	0.8	0.67	0.55	0.47	0.39
Fishing	3.6	3.0	2.9	2.6	2.6	2.4	2.5	2.0	1.8	1.8	1.9	2.1	1.99	1.92	1.67	1.45
Mining & Quarrying	0.9	0.7	0.6	0.7	0.9	0.9	1.0	1.0	1.0	0.9	0.9	1.4	1.60	1.66	1.91	2.37
Manufacturing	0.8	0.8	0.8	0.9	0.9	0.8	0.9	1.3	1.3	1.3	1.4	1.4	0.94	2.05	1.88	2.01
Electricity & Water	2.2	2.8	2.7	2.6	2.1	2.4	2.5	2.8	3.0	3.4	3.8	3.8	3.51	3.65	3.54	3.16
Construction	16.3	12.9	12.0	13.3	14.8	14.1	14.5	16.2	15.1	12.5	11.8	11.8	14.07	14.04	17.46	23.92
Wholesale & Retail	6.6	6.5	6.3	8.1	7.8	7.6	7.8	7.5	7.8	7.2	6.6	6.8	6.11	6.07	5.87	5.29
Hotels & Restaurants	32.3	35.3	38.2	35.1	31.9	33.7	32.5	31.9	30.0	31.8	30.0	31.2	30.81	31.99	31.77	27.94
Transport	6.2	6.3	6.2	5.9	5.5	5.7	5.8	5.4	5.3	4.9	4.9	4.9	4.95	4.97	5.31	5.63
Road Transport	3.5	3.3	3.2	3.0	3.0	2.9	3.0	2.8	2.7	2.5	2.4	2.4	2.71	2.85	3.19	3.59
Sea Transport	2.1	2.3	2.3	2.2	1.8	2.2	2.2	2.0	2.1	1.9	1.9	1.9	1.88	1.77	1.73	1.72
Air Transport	0.6	0.7	0.7	0.7	0.6	0.6	0.6	0.5	0.5	0.6	0.5	0.5	0.37	0.35	0.39	0.32
Communications	8.6	9.3	8.9	9.3	9.8	11.5	11.1	12.2	13.3	12.3	13.7	12.0	12.75	12.55	10.51	10.30
Banks & Insurance	9.3	9.8	10.1	10.8	14.7	12.4	12.4	12.9	16.3	19.3	17.8	18.4	19.87	18.55	16.65	15.82
Real Estate & Housing	4.2	4.0	3.8	3.9	3.9	3.7	3.6	3.4	3.4	3.4	3.6	3.6	3.14	2.89	2.52	2.16
Government Services	14.4	14.2	14.2	14.9	15.2	14.5	14.2	13.4	14.0	14.1	15.0	15.3	13.92	13.04	11.84	9.68
Other Services	1.7	1.7	1.6	1.7	1.7	1.8	1.8	1.7	1.9	1.9	2.0	2.5	1.96	1.82	1.70	1.46
Less Imputed Service Charge	8.4	8.2	9.8	11.3	13.2	12.8	11.8	12.8	15.4	15.6	14.6	16.2	16.50	15.95	13.31	11.77
TOTAL	100	100	100	100	100	100	100	100	100	100	100	100	100	100	100	100

Source: Anguilla Statistics Department / ECCB
N.B. Revision was done to 2003 figures

ANGUILLA
TABLE 5 - RATE OF GROWTH OF GROSS DOMESTIC PRODUCT BY ECONOMIC ACTIVITY AT BASIC PRICES IN CURRENT PRICES

INDUSTRIAL SECTORS	1993	1994	1995	1996	1997	1998	1999	2000	2001	2002	2003	2004	2005	2006	2007
Agriculture	0.0	18.7	-10.3	9.8	4.4	7.7	-11.5	-7.5	-4.6	14.5	1.8	7.3	3.7	4.9	7.6
Crops	0.0	90.0	-33.3	-26.3	25.0	42.9	-22.0	46.2	22.8	1.4	-18.3	5.2	-16.4	41.2	6.6
Livestock	0.0	25.3	6.9	-4.6	4.8	6.0	-12.6	-11.9	-31.1	65.6	-13.4	0.6	-8.5	0.4	2.0
Fishing	0.0	10.9	-15.1	21.4	3.0	6.0	-9.9	-10.2	2.9	2.1	12.1	10.0	10.0	3.0	9.2
Mining & Quarrying	0.0	-1.7	14.8	34.8	10.1	8.2	10.8	6.4	-10.0	-3.6	61.3	35.1	20.1	47.2	50.1
Manufacturing	4.5	5.7	4.7	18.8	3.8	14.6	67.6	3.5	4.3	4.1	13.8	-21.1	150.3	11.6	36.0
Electricity & Water	40.6	3.8	-25.9	30.8	27.8	13.5	19.5	-18.6	34.1	42.7	-9.0	12.1	24.2	14.8	8.4
Construction	-13.4	0.0	8.0	15.2	7.2	8.3	27.4	-6.7	-14.6	-8.4	3.2	45.3	18.7	52.4	86.6
Wholesale & Retail	10.6	8.0	23.7	3.8	7.3	10.2	7.1	10.0	-2.9	-8.8	9.9	9.7	13.5	17.9	15.0
Hotels & Restaurants	20.0	19.7	-5.0	-6.0	15.2	6.2	6.6	-6.4	9.5	-8.3	6.7	20.8	18.7	17.5	7.5
Transport	13.6	8.0	-1.1	1.6	14.5	7.8	4.3	4.6	-0.3	3.1	10.0	32.0	24.1	37.6	31.0
Road Transport	11.1	2.8	-10.1	8.8	6.3	8.8	4.8	0.9	-8.7	-0.6	8.5	54.1	41.9	53.9	42.9
Sea Transport	16.8	13.0	2.4	-6.6	21.1	8.5	4.0	8.8	-0.3	6.1	8.3	27.8	8.4	13.5	19.7
Air Transport	15.6	15.9	23.3	1.1	24.7	4.0	3.4	4.9	21.9	4.8	15.9	1.3	13.0	36.6	7.4
Communications	15.7	17.1	-0.2	9.4	27.8	2.5	7.1	8.5	-4.0	9.0	-10.0	29.8	13.1	-21.6	24.6
Banks & Insurance	20.9	13.5	3.3	42.4	-7.2	5.2	12.7	28.2	6.8	-16.5	8.8	27.7	5.1	17.0	24.9
Real Estate & Housing	2.3	2.5	-3.1	8.2	2.9	5.5	1.5	2.0	4.3	3.1	2.3	1.8	2.0	5.1	6.1
Government Services	6.2	11.9	2.1	6.7	8.1	5.0	19.9	8.3	8.0	7.0	4.6	11.4	8.4	21.8	18.8
Other Services	6.2	6.6	4.0	6.7	14.9	7.5	8.8	15.0	7.3	5.6	30.2	-2.6	6.3	9.9	9.6
Less Imputed Service Charge	10.7	29.9	10.4	20.4	6.1	-2.7	17.1	22.4	5.0	-23.9	13.9	18.4	7.1	5.0	7.0
Service charge															
TOTAL	9.8	10.7	-0.9	6.6	10.5	7.7	11.3	0.2	2.7	1.1	4.1	21.3	16.4	22.2	30.6

Source: Anguilla Statistics Department / ECCB
N.B. Revision was done to 2003 figures

ANGUILLA

Table 6 - RATE OF GROWTH OF GROSS DOMESTIC PRODUCT BY ECONOMIC ACTIVITY AT BASIC PRICES IN CONSTANT PRICES

INDUSTRIAL SECTORS	1993	1994	1995	1996	1997	1998	1999	2000	2001	2002	2003	2004	2005	2006	2007
Agriculture	-8.8	13.0	-11.2	0.5	5.1	7.2	-11.4	-7.7	-5.2	15.1	1.5	7.1	2.0	5.0	4.4
Crops	-3.8	92.0	-35.4	-25.8	39.1	28.1	-22.0	43.8	19.6	3.6	-17.5	2.1	-8.3	40.9	4.5
Livestock	2.2	25.2	5.2	-4.4	5.1	6.0	-12.3	-12.3	-31.3	66.0	-14.0	0.7	-8.8	0.4	2.0
Fishing	-12.3	4.1	-15.1	5.2	3.1	6.0	-10.0	-10.0	2.9	2.0	12.0	10.0	6.8	3.0	5.0
Mining & Quarrying	-15.2	-2.1	15.1	24.3	9.8	11.0	9.3	6.2	-10.1	-3.6	61.3	35.0	14.9	36.1	50.0
Manufacturing	4.5	3.6	6.8	3.2	3.1	9.7	59.9	3.4	2.1	1.2	9.6	-24.7	142.5	8.9	29.0
Electricity & Water	34.4	4.4	-9.2	-15.0	25.3	9.7	20.3	8.3	14.8	9.2	3.9	6.7	15.3	14.7	7.8
Construction	-14.9	0.0	6.0	15.3	4.0	8.0	21.2	-6.7	-14.6	-8.4	3.2	38.4	10.5	47.2	65.7
Wholesale & Retail	6.7	4.4	21.8	0.2	6.7	7.5	5.0	3.3	-5.0	-10.8	5.9	4.4	10.0	14.5	9.1
Hotels & Restaurants	17.4	16.1	-11.8	-6.0	15.2	1.6	6.6	-6.4	9.5	-8.3	6.7	15.1	15.0	17.5	6.4
Transport	8.1	6.2	-8.9	-3.4	13.6	5.7	1.1	-1.7	-3.5	-4.7	2.9	18.6	11.2	26.3	28.4
Road Transport	3.6	2.8	-10.0	5.1	4.4	8.9	2.1	-6.6	-2.6	-8.4	5.0	30.2	16.7	32.3	36.1
Sea Transport	13.3	9.8	-7.2	-15.6	29.9	4.8	-0.3	4.6	-7.0	0.3	2.5	13.0	4.3	15.9	20.3
Air Transport	15.7	10.4	-9.4	-1.0	10.5	-5.7	1.0	1.0	5.0	-4.7	-5.0	-15.6	6.2	30.2	1.8
Communications	15.8	2.5	0.8	8.4	28.0	1.5	19.4	9.1	-4.3	7.5	-9.7	23.7	9.0	-0.9	18.6
Banks & Insurance	12.6	10.1	3.3	40.9	-8.5	5.9	13.0	25.7	22.0	-10.5	6.3	25.8	3.4	6.2	15.0
Real Estate & Housing	2.4	2.5	-3.1	4.5	2.9	3.0	1.0	1.6	2.1	3.1	2.4	1.8	2.0	3.0	4.0
Government Services	6.0	7.4	0.8	5.1	3.9	3.2	2.8	3.9	4.3	3.2	4.6	5.9	3.8	7.4	-1.1
Other Services	2.7	3.0	2.5	3.3	14.3	4.9	6.3	8.1	4.9	2.5	25.5	-7.3	3.0	10.1	3.9
Less Imputed Service Charge	5.3	27.9	10.3	20.4	6.1	-2.7	17.0	20.2	5.0	-9.1	13.9	18.4	7.1	-1.2	7.0
TOTAL	7.5	7.1	-4.1	3.5	9.2	5.2	8.7	-0.3	3.3	-3.1	2.8	16.4	10.7	18.3	21.0

Source: Anguilla Statistics Department / ECCB

N.B. Revision was done to 2003 figures

ANGUILLA
TABLE 7 - GROSS DOMESTIC PRODUCT PRICE DEFLATORS BY ECONOMIC ACTIVITY AT BASIC PRICES IN CONSTANT 1990 PRICES (EC\$ MILLION)

INDUSTRIAL SECTORS	1992	1993	1994	1995	1996	1997	1998	1999	2000	2001	2002	2003	2004	2005	2006	2007
Agriculture	95.3	104.5	109.8	110.9	121.1	120.2	120.9	120.8	121.0	121.8	121.2	121.5	121.82	123.85	123.70	127.54
Crops	115.4	120.0	118.8	122.6	121.7	109.4	122.0	121.9	123.9	127.3	124.6	123.4	127.08	115.91	116.13	118.45
Livestock	119.1	116.5	116.7	118.6	118.3	117.9	117.9	117.5	118.0	118.4	118.1	119.0	118.92	119.26	119.26	119.26
Fishing	87.3	99.5	106.0	106.0	122.3	122.2	122.1	122.2	122.0	121.9	122.1	122.2	122.22	125.90	125.90	130.94
Mining & Quarrying	104.5	123.2	123.7	123.4	133.8	134.2	130.9	132.8	133.0	133.1	133.1	133.1	133.24	139.22	150.57	150.66
Manufacturing	105.5	105.5	107.6	105.6	121.5	122.4	127.9	134.0	134.2	137.1	141.0	146.5	153.62	158.57	162.53	171.35
Electricity & Water	137.8	144.2	143.3	116.9	179.8	183.4	189.7	188.6	141.7	165.4	210.4	189.6	199.10	214.51	214.69	215.88
Construction	117.2	119.3	119.3	121.6	121.5	125.2	125.5	131.9	131.9	131.9	131.9	131.9	138.51	148.90	154.13	173.56
Wholesale & Retail	107.2	111.1	114.9	116.8	121.0	121.7	124.7	127.1	135.3	138.4	141.5	146.9	154.29	159.18	163.95	172.86
Hotels & Restaurants	100.9	103.1	106.3	114.5	114.5	114.6	119.7	119.7	119.7	119.7	119.7	119.7	125.70	129.72	129.72	131.02
Transport	112.5	118.2	120.2	130.6	137.4	138.5	141.3	145.7	154.9	160.2	173.3	185.2	206.02	229.94	250.52	255.56
Road Transport	108.2	116.1	116.1	116.0	120.1	122.2	122.2	125.3	135.4	126.8	137.4	142.0	167.95	204.29	237.51	249.40
Sea Transport	113.7	117.1	120.5	133.0	147.2	137.2	142.0	148.1	154.0	165.1	174.7	184.5	208.65	216.82	212.33	211.24
Air Transport	131.3	131.3	137.7	187.5	191.6	216.2	238.4	244.0	253.5	294.3	323.8	394.8	474.07	504.65	529.46	558.77
Communications	85.3	85.3	97.4	96.4	97.3	97.1	98.1	88.0	87.5	87.8	89.1	88.8	93.20	96.69	76.48	80.37
Banks & Insurance	104.0	111.6	115.1	115.1	116.4	118.0	117.2	116.8	119.2	104.3	97.4	99.7	101.25	102.95	113.46	123.18
Real Estate & Housing	113.3	113.2	113.2	113.3	117.3	117.3	120.2	120.8	121.3	124.0	124.0	123.9	123.88	123.85	126.33	128.86
Government Services	105.8	106.0	110.4	112.0	113.7	118.2	120.2	140.2	146.0	151.1	156.7	156.7	164.91	172.30	195.40	234.68
Other Services	107.1	110.8	114.7	116.4	120.2	120.8	123.8	126.8	134.9	137.9	142.1	147.4	154.84	159.73	159.55	168.30
Less Imputed Service Charge	103.2	108.5	110.3	110.3	110.3	110.3	110.3	110.3	112.4	112.4	94.1	94.1	94.09	94.09	100.00	100.00
TOTAL	105.4	107.7	111.2	115.0	118.4	119.8	122.7	125.8	126.4	125.7	130.9	132.8	138.26	145.37	150.14	162.03
GROWTH RATE	0.0%	2.2%	3.3%	3.3%	3.0%	1.2%	2.5%	2.5%	0.5%	-0.6%	4.1%	1.4%	4.1%	5.1%	3.3%	7.9%

Source: Anguilla Statistics Department / ECCB

N.B. Revision was done to 2003 figures

ANGUILLA
TABLE 8 - PERCENTAGE CHANGE IN GDP PRICE DEFLATORS BY INDUSTRY SECTOR

INDUSTRIAL SECTORS	1993 /92	1994 /93	1995 /94	1996 /95	1997 /96	1998 /97	1999 /98	2000 /99	2001 /00	2002 /01	2003 /02	2004 /03	2005 /04	2006 /05	2007 /06
Agriculture	9.7%	5.1%	1.0%	9.2%	-0.7%	0.5%	-0.1%	0.2%	0.6%	-0.5%	0.3%	0.3%	1.7%	-0.1%	3.1%
Crops	4.0%	-1.0%	3.2%	-0.7%	10.2%	11.5%	-0.1%	1.7%	2.7%	-2.1%	-0.9%	3.0%	-8.8%	0.2%	2.0%
Livestock	-2.2%	0.1%	1.6%	-0.2%	-0.3%	0.0%	-0.3%	0.4%	0.4%	-0.3%	0.8%	-0.1%	0.3%	0.0%	0.0%
Fishing	14.0%	6.5%	0.0%	15.4%	-0.1%	-0.1%	0.1%	-0.1%	0.0%	0.1%	0.1%	0.0%	3.0%	0.0%	4.0%
Mining & Quarrying	17.9%	0.4%	-0.2%	8.5%	0.3%	-2.5%	1.5%	0.2%	0.1%	0.0%	0.0%	0.1%	4.5%	8.2%	0.1%
Manufacturing	0.0%	2.0%	-1.9%	15.1%	0.7%	4.5%	4.8%	0.1%	2.2%	2.9%	3.9%	4.8%	3.2%	2.5%	5.4%
Electricity & Water	4.6%	-0.6%	18.4%	53.8%	2.0%	3.5%	-0.6%	-24.9%	16.8%	27.2%	-9.9%	5.0%	7.7%	0.1%	0.6%
Construction	1.8%	0.0%	1.9%	0.0%	3.0%	0.3%	5.1%	0.0%	0.0%	0.0%	0.0%	5.0%	7.5%	3.5%	12.6%
Wholesale & Retail	3.7%	3.5%	1.6%	3.6%	0.6%	2.5%	2.0%	6.5%	2.2%	2.3%	3.8%	5.0%	3.2%	3.0%	5.4%
Hotels & Restaurants	2.2%	3.1%	7.8%	0.0%	0.0%	4.5%	0.0%	0.0%	0.0%	0.0%	0.0%	5.0%	3.2%	0.0%	1.0%
Transport	5.1%	1.7%	8.6%	5.2%	0.8%	2.0%	3.1%	6.3%	3.4%	8.2%	6.9%	11.3%	11.6%	8.9%	2.0%
Road Transport	7.3%	0.0%	-0.1%	3.5%	1.8%	-0.1%	2.6%	8.0%	-6.3%	8.4%	3.3%	18.3%	21.6%	16.3%	5.0%
Sea Transport	3.1%	2.9%	10.4%	10.7%	-6.8%	3.5%	4.3%	4.0%	7.2%	5.8%	5.6%	13.1%	3.9%	-2.1%	-0.5%
Air Transport	-0.1%	4.9%	36.1%	2.2%	12.8%	10.3%	2.4%	3.9%	16.1%	10.0%	21.9%	20.1%	6.4%	4.9%	5.5%
Communications	-0.1%	14.2%	-1.0%	0.9%	-0.2%	1.0%	10.3%	-0.5%	0.3%	1.4%	-0.3%	5.0%	3.7%	-20.9%	5.1%
Banks & Insurance	7.4%	3.1%	0.0%	1.1%	1.4%	-0.7%	-0.3%	2.0%	-12.5%	-6.6%	2.4%	1.5%	1.7%	10.2%	8.6%
Real Estate & Housing	-0.1%	0.0%	0.1%	3.6%	0.0%	2.5%	0.5%	0.4%	2.2%	0.0%	-0.1%	0.0%	0.0%	2.0%	2.0%
Government Services	0.2%	4.2%	1.4%	1.5%	4.0%	1.7%	16.6%	4.2%	3.5%	3.7%	0.0%	5.2%	4.5%	13.4%	20.1%
Other Services	3.5%	3.5%	1.5%	3.3%	0.5%	2.5%	2.4%	6.4%	2.3%	3.0%	3.8%	5.0%	3.2%	-0.1%	5.5%
Less Imputed Service Charge	5.1%	1.6%	0.0%	0.0%	0.0%	0.0%	0.0%	1.9%	0.0%	-16.3%	0.0%	0.0%	0.0%	6.3%	0.0%
TOTAL	2.2%	3.3%	3.3%	3.0%	1.2%	2.5%	2.5%	0.5%	-0.6%	4.1%	1.4%	4.1%	5.1%	3.3%	7.9%

Source: Anguilla Statistics Department / ECCB
N.B. Revision was done to 2003 figures

ANGUILLA
TABLE 9 - INDEX OF GROSS DOMESTIC PRODUCT BY ECONOMIC ACTIVITY AT BASIC PRICES IN CURRENT PRICES (1990 =100)

INDUSTRIAL SECTORS	1992	1993	1994	1995	1996	1997	1998	1999	2000	2001	2002	2003	2004	2005	2006	2007
Agriculture	90.8	90.8	107.8	96.7	106.2	110.8	119.4	105.7	97.7	93.2	106.8	108.7	116.7	121.1	127.0	136.6
Crops	35.7	35.7	67.9	45.2	33.3	41.7	59.5	46.4	67.9	83.3	84.5	69.0	72.6	60.7	85.7	91.4
Livestock	135.0	135.0	169.2	180.8	172.5	180.8	191.7	167.5	147.5	101.7	168.3	145.8	146.7	134.2	134.7	137.4
Fishing	89.4	89.4	99.1	84.2	102.2	105.2	111.5	100.4	90.2	92.8	94.8	106.3	116.9	128.6	132.5	144.7
Mining & Quarrying	177.3	177.3	174.2	200.0	269.7	297.0	321.2	356.1	378.8	340.9	328.8	530.3	716.7	860.6	1266.7	1901.5
Manufacturing	125.0	130.6	138.0	144.6	171.7	178.3	204.3	342.4	354.3	369.6	384.8	438.0	345.7	865.2	965.8	1313.0
Electricity & Water	162.7	228.7	237.3	175.8	229.9	293.9	333.6	398.8	324.6	435.2	621.2	565.6	634.0	787.7	904.5	980.3
Construction	101.1	87.6	87.6	94.6	109.0	116.8	126.5	161.2	150.3	128.4	117.5	121.3	176.2	209.3	318.9	595.1
Wholesale & Retail	118.5	131.1	141.6	175.2	181.8	195.2	215.0	230.4	253.3	246.0	224.5	246.7	270.6	307.0	362.0	416.3
Hotels & Restaurants	103.8	124.5	149.0	141.5	133.1	153.2	162.7	173.5	162.4	177.8	163.1	174.0	210.2	249.5	293.2	315.2
Transport	124.5	141.4	152.7	151.1	153.6	175.8	189.6	197.7	206.7	206.1	212.6	233.7	308.5	382.9	527.0	690.6
Road Transport	126.6	140.6	144.5	129.9	141.4	150.3	163.5	171.4	172.9	157.8	156.8	170.1	262.0	371.9	572.1	817.7
Sea Transport	118.8	138.7	156.8	160.5	150.0	181.6	197.0	204.9	222.9	222.2	235.7	255.3	326.3	353.8	401.5	480.5
Air Transport	132.9	153.7	178.0	219.5	222.0	276.8	287.8	297.6	312.2	380.5	398.8	462.2	468.3	529.3	723.2	776.8
Communications	121.8	141.0	165.1	164.9	180.3	230.5	236.4	253.1	274.7	263.7	287.5	258.7	335.9	379.9	297.8	371.1
Banks & Insurance	97.8	118.3	134.3	138.7	197.5	183.3	192.9	217.4	278.7	297.7	248.6	270.5	345.5	363.3	425.1	530.8
Real Estate & Housing	122.2	125.0	128.1	124.2	134.4	138.3	146.0	148.1	151.1	157.6	162.5	166.2	169.2	172.5	181.2	192.2
Government Services	113.7	120.7	135.1	138.0	147.2	159.2	167.1	200.3	216.8	234.1	250.5	262.0	292.0	316.7	385.7	458.2
Other Services	115.3	122.5	130.6	135.9	145.0	166.5	178.9	194.7	223.9	240.2	253.6	330.1	321.5	341.6	375.6	411.5
Less Imputed Service Charge	109.6	121.4	157.7	174.1	209.6	222.4	216.3	253.3	310.1	325.5	247.6	281.9	333.9	357.5	375.3	401.7
TOTAL	108.7	119.4	132.1	130.9	139.5	154.1	166.1	184.9	185.4	190.3	192.4	200.4	243.0	282.9	345.8	451.5

Source: Anguilla Statistics Department / ECCB
N.B. Revision was done to 2003 figures

ANGUILLA
TABLE 10 - INDEX OF GROSS DOMESTIC PRODUCT BY ECONOMIC ACTIVITY AT BASIC PRICES IN CONSTANT 1990 PRICES (1990=100)

INDUSTRIAL SECTORS	1992	1993	1994	1995	1996	1997	1998	1999	2000	2001	2002	2003	2004	2005	2006	2007
Agriculture	95.3	86.9	98.2	87.2	87.7	92.2	98.8	87.5	80.8	76.5	88.1	89.5	95.8	97.7	102.7	107.1
Crops	31.0	29.8	57.1	36.9	27.4	38.1	48.8	38.1	54.8	65.5	67.9	56.0	57.1	52.4	73.8	77.1
Livestock	113.3	115.8	145.0	152.5	145.8	153.3	162.5	142.5	125.0	85.8	142.5	122.5	123.3	112.5	113.0	115.2
Fishing	102.4	89.8	93.5	79.4	83.5	86.1	91.3	82.2	74.0	76.1	77.7	87.0	95.7	102.2	105.2	110.5
Mining & Quarrying	169.7	143.9	140.9	162.1	201.5	221.2	245.5	268.2	284.8	256.1	247.0	398.5	537.9	618.2	841.2	1262.1
Manufacturing	118.5	123.8	128.3	137.0	141.3	145.7	159.8	255.4	264.1	269.6	272.8	298.9	225.0	545.7	594.2	766.3
Electricity & Water	118.0	158.6	165.6	150.4	127.9	160.2	175.8	211.5	229.1	263.1	287.3	298.4	318.4	367.2	421.3	454.1
Construction	86.3	73.4	73.4	77.8	89.7	93.3	100.8	122.2	114.0	97.3	89.1	92.0	127.2	140.5	206.9	342.9
Wholesale & Retail	110.6	118.0	123.2	150.1	150.3	160.4	172.5	181.2	187.2	177.8	158.6	167.9	175.4	192.9	220.8	240.9
Hotels & Restaurants	102.9	120.8	140.2	123.6	116.2	133.8	135.9	144.9	135.7	148.5	136.2	145.3	167.2	192.3	226.0	240.6
Transport	110.7	119.7	127.0	115.7	111.7	126.9	134.2	135.7	133.4	128.7	122.7	126.2	149.7	166.5	210.4	270.2
Road Transport	116.9	121.1	124.5	112.0	117.7	122.9	133.9	136.7	127.8	124.5	114.1	119.8	156.0	182.0	240.9	327.9
Sea Transport	104.5	118.4	130.1	120.7	101.9	132.3	138.7	138.3	144.7	134.6	135.0	138.3	156.4	163.2	189.1	227.4
Air Transport	101.2	117.1	129.3	117.1	115.9	128.0	120.7	122.0	123.2	129.3	123.2	117.1	98.8	104.9	136.6	139.0
Communications	142.8	165.4	169.6	171.0	185.3	237.3	240.9	287.6	313.8	300.3	322.7	291.4	360.4	393.0	389.4	461.8
Banks & Insurance	94.1	106.0	116.7	120.5	169.7	155.4	164.6	186.0	233.9	285.3	255.2	271.3	341.3	352.9	374.7	430.9
Real Estate & Housing	107.9	110.4	113.2	109.6	114.5	117.9	121.4	122.6	124.6	127.1	131.0	134.2	136.5	139.3	143.5	149.2
Government Services	107.5	113.9	122.3	123.2	129.5	134.7	139.0	142.9	148.5	154.9	159.8	167.2	177.1	183.8	197.4	195.2
Other Services	107.7	110.5	113.9	116.7	120.6	137.8	144.5	153.6	166.0	174.2	178.5	223.9	207.7	213.9	235.4	244.5
Less Imputed Service Charge	106.2	111.9	143.1	157.8	190.0	201.6	196.1	229.5	275.9	289.6	263.2	299.7	354.9	380.0	375.3	401.7
TOTAL	103.2	110.9	118.8	113.9	117.8	128.7	135.3	147.0	146.6	151.4	146.8	150.9	175.7	194.6	230.3	278.7

Source: Anguilla Statistics Department / ECCB
N.B. Revision was done to 2003 figures

ANGUILLA
TABLE 11 - CURRENT ACCOUNT OF CENTRAL GOVERNMENT REVENUE (EC \$'000)

	1998	1999	2000	2001	2002	2003	2004	2005	2006	2007
Direct Taxes	270	340	474	701	575	606	613	552	596	682
Indirect Taxes	45,703	50,515	58,149	55,717	61,092	66,229	89,800	97,097	148,103	161,882
Import Duties	24,475	28,982	35,200	30,113	29,895	32,850	40,634	50,925	65,609	87,356
Export Duties	0	0	0	0	0	0	0	0	0	0
Other Indirect Taxes	21,228	21,532	22,949	25,604	31,197	33,379	49,166	47,589	84,818	78,541
Property Income	2,276	2,115	2,146	252	3,200	2,454	2,970	3,415	3,569	5,217
Interest	151	147	81	20	3	21	274	155	883	1,228
Rent of Land *	2,071	1,901	1,947	97	2,234	2,217	2,534	2,471	2,611	3,214
Dividends	54	68	118	135	963	216	162	790	74	776
Current Taxes on:	2,761	2,216	2,230	4,115	4,134	4,299	4,765	5,020	6,488	7,466
Income	2,642	2,106	2,143	4,018	4,009	4,134	4,598	4,862	6,310	7,293
Other	119	110	87	96	126	165	167	158	177	174
ECCB Profits	513	413	233	321	251	184	172	34	0	0
Surplus of Departmental Enterprises	-448	-1,336	-4,216	-5,351	-3,887	-4,551	-4,243	-4,290	-6,179	228
Total Recurrent Revenue	66,387	66,978	60,539	55,756	65,365	69,221	94,076	101,828	152,577	175,476
GROWTH RATE		0.9%	-9.6%	-7.9%	17.2%	5.9%	35.9%	8.2%	49.8%	15.0%

Source: Anguilla Statistics Department / ECCB

* In 2001 hotel closure reduced rent to Government

Note that figures from 1999 onwards have been revised

ANGUILLA
TABLE 12 - CURRENT ACCOUNT OF CENTRAL GOVERNMENT EXPENDITURE (EC\$'000)

	1998	1999	2000	2001	2002	2003	2004	2005	2006	2007
Personal Emoluments & other benefits	25,772	31,826	34,357	36,946	38,735	39,790	35,151	37,628	44,714	54,096
Personal Emoluments	24,503	30,329	31,439	35,239	37,214	37,911	31,735	34,768	39,885	47,791
Social Security	1,269	1,497	1,591	1,707	1,521	1,879	1,579	1,741	1,980	2,734
Ex Gratia Award - Govt Employees (Bonus)	0	0	1,327	0	0	0	1,837	1,119	2,849	3,571
Pensions & Gratuities	2,053	1,973	2,155	2,438	2,824	3,546	3,552	3,791	5,819	5,761
Personal emoluments, benefits, pensions & gratuities ¹	27,825	33,799	36,511	39,384	41,559	43,336	38,703	41,420	50,533	59,857
Miscellaneous Goods & Services	25,988	24,164	25,075	26,331	25,634	26,873	45,160	51,655	75,713	90,973
Less Fees and Sales ²	19,125	19,095	8,880	7,555	8,139	7,950	6,708	8,002	9,020	13,604
Fees and Sales (excluding department earnings)	3,813	6,379	7,357	7,555	8,139	7,950	6,708	8,002	9,020	13,604
Other Sales and Services*	15,312	12,716	1,523	0	0	0	0	0	0	0
Government Final Consumption	34,688	38,868	52,706	58,160	59,054	62,259	77,154	85,073	117,227	137,226
Current Transfers To:	3,104	2,694	2,862	2,225	1,890	2,028	1,904	2,495	2,540	3,497
Households	1,956	1,571	1,511	1,333	969	885	644	1,194	1,415	2,290
Non Profit Making Bodies	347	120	143	82	84	114	115	121	102	110
Regional Organisations	687	937	1,127	600	767	721	903	1,016	1,018	882
International Bodies	114	66	80	210	69	309	243	164	5	214
Interest and subsidy	1,659	1,462	2,059	2,375	3,634	3,928	3,292	4,755	6,131	164
Total Expenditure	39,451	43,024	57,627	62,760	64,578	68,216	82,351	92,323	125,898	140,886
GROWTH RATE		9.1%	33.9%	8.9%	2.9%	5.6%	20.7%	12.1%	36.4%	11.9%
Surplus on Current Account	26,936	23,955	2,912	(7,004)	787	1,005	11,725	9,505	26,678	34,589
TOTAL Recurrent Revenue	66,387	66,978	60,539	55,756	65,365	69,221	94,076	101,828	152,577	175,476

¹ - excludes departmental enterprises i.e. water, airport & post office

² includes EU Trans-Shipments

Note that figures from 1999 onwards have been revised

Source: Anguilla Statistics Department / ECCB

ANGUILLA
TABLE 13 - CURRENT ACCOUNT OF DEPARTMENTAL ENTERPRISES (EC\$'000)

	1998	1999	2000	2001	2002	2003	2004	2005	2006	2007
RECEIPTS										
Sales of Goods & Services	2,922	3,289	4,106	5,538	6,647	6,825	7,528	7,876	9,965	16,491
Miscellaneous Other Receipts	276	0	0	0	0	0	0	0	0	0
Total Receipts	3,198	3,289	4,106	5,538	6,647	6,825	7,528	7,876	9,965	16,491
GROWTH RATE		2.8%	24.8%	34.9%	20.0%	2.7%	10.3%	4.6%	26.5%	65.5%
EXPENDITURE										
Personal Emoluments	2,451	2,769	2,933	3,510	3,690	3,860	4,183	4,598	6,052	5,921
Other Operational Expenses	1,195	1,856	5,389	7,378	6,844	7,516	7,589	7,568	10,092	10,342
Total Expenditure	3,646	4,625	8,323	10,888	10,534	11,376	11,772	12,166	16,144	16,263
GROWTH RATE		26.8%	80.0%	30.8%	-3.3%	8.0%	3.5%	3.4%	32.7%	0.7%
Surplus/deficit depart. enterprises	-448	-1,336	-4,216	-5,351	-3,887	-4,551	-4,243	-4,290	-6,179	228

Note: The Departmental Earnings & Enterprises are: Water Port, Post Office, Airport & Water

Note that figures from 1999 onwards have been revised

Source: Anguilla Statistics Department / ECCB

ANGUILLA
TABLE 14 - RATE OF GROWTH OF CENTRAL GOVERNMENT RECURRENT REVENUE

	1999	2000	2001	2002	2003	2004	2005	2006	2007
Direct Taxes	25.9	39.6	47.8	-18.0	5.4	1.0	-9.9	8.0	14.4
Indirect Taxes	10.5	15.1	-4.2	9.6	8.4	35.6	8.1	52.5	9.3
Import Duties	18.4	21.5	-14.5	-0.7	9.9	23.7	25.3	28.8	33.1
Export Duties									
Other Indirect Taxes	1.4	6.6	11.6	21.8	7.0	47.3	-3.2	78.2	-7.4
Property Income	-7.1	1.5	-88.2	1,167.3	-23.3	21.1	15.0	4.5	46.2
Interest	-2.8	-44.8	-74.8	-86.1	631.7	1,222.4	-43.7	471.2	39.0
Rent of Land	-8.2	2.4	-95.0	2,201.2	-0.8	14.3	-2.5	5.7	23.1
Dividends	25.0	75.0	14.3	613.0	-77.6	-25.0	387.6	-90.6	944.7
Current Taxes on:	-19.7	0.6	84.5	0.5	4.0	10.8	5.4	29.2	15.1
Households	-20.3	1.8	87.5	-0.2	3.1	11.2	5.8	29.8	15.6
Other	-7.6	-20.9	10.9	30.3	31.2	1.3	-5.6	12.5	-2.1
ECCB Profits	-19.6	-43.6	37.9	-21.7	-26.9	-6.3	-80.4	-100.0	-
Surplus of Departmental Enterprises	198.1	215.7	26.9	-27.3	17.1	-6.8	1.1	44.0	-103.7
Total Recurrent Revenue	0.9	-9.6	-7.9	17.2	5.9	35.9	8.2	49.8	15.0

Source: Anguilla Statistics Department / ECCB

ANGUILLA
TABLE 15 - RATE OF GROWTH OF CENTRAL GOVERNMENT RECURRENT EXPENDITURE

	1999	2000	2001	2002	2003	2004	2005	2006	2007
Personal Emoluments	23.5	8.0	7.5	4.8	2.7	-11.7	7.0	18.8	21.0
Pensions & Gratuities	-3.9	9.2	13.1	15.9	25.5	0.2	6.7	53.5	-1.0
Miscellaneous Goods & Services	-7.0	3.8	5.0	-2.6	4.8	68.0	14.4	46.6	20.2
Less Fees & Sales	-0.2	-53.5	-14.9	7.7	-2.3	-15.6	19.3	12.7	50.8
Government Final Consumption	12.0	35.6	10.3	1.5	5.4	23.9	10.3	37.8	17.1
Current Transfers To:	-13.2	6.2	-22.3	-15.1	7.3	-6.1	31.0	1.8	37.7
Households	-19.7	-3.8	-11.8	-27.3	-8.7	-27.3	85.5	18.5	61.9
Non Profit Making Bodies	-65.4	18.9	-42.8	3.3	34.7	0.9	5.9	-15.7	7.2
Regional Organisations	36.5	20.3	-46.8	27.8	-6.0	25.3	12.5	0.3	-13.3
International Bodies	-42.1	21.1	163.0	-67.1	346.6	-21.3	-32.5	-97.1	4,441.8
Interest and subsidy	-11.9	40.9	15.3	53.0	8.1	-16.2	44.4	28.9	-97.3
Total Expenditure	9.1	33.9	8.9	2.9	5.6	20.7	12.1	36.4	11.9

Note that figures from 1999 onwards have been revised

Source: Anguilla Statistics Department / ECCB

ANGUILLA
TABLE 16 - RATE OF GROWTH OF DEPARTMENTAL ENTERPRISES

	1999	2000	2001	2002	2003	2004	2005	2006	2007
RECEIPTS									
Sales of Goods & Services	12.6	24.8	34.9	20.0	2.7	10.3	4.6	26.5	65.5
Miscellaneous Other Receipts	- 100.0	0	0	0	0	0	0	0	0
Total Receipts	2.8	24.8	34.9	20.0	2.7	10.3	4.6	26.5	65.5
EXPENDITURE									
Personal Emoluments	13.0	5.9	19.6	5.1	4.6	8.4	9.9	31.6	-2.2
Other Operational Expenses	55.3	190.4	36.9	-7.2	9.8	1.0	-0.3	33.3	2.5
Total Expenditure	26.8	80.0	30.8	-3.3	8.0	3.5	3.4	32.7	0.7
Surplus/deficit depart. enterprises	198.1	215.7	26.9	-27.3	17.1	-6.8	1.1	44.0	- 103.7

Note: The Departmental Enterprises are: Airport, Post Office & Water

Note that figures from 1999 onwards have been revised

Source: Anguilla Statistics Department / ECCB

ANGUILLA
TABLE 17 - CURRENT ACCOUNT REVENUE OF CENTRAL GOVERNMENT AS A PERCENTAGE OF GDP

	1998	1999	2000	2001	2002	2003	2004	2005	2006	2006
Direct Taxes	0.1	0.1	0.2	0.3	0.2	0.2	0.2	0.2	0.1	0.1
Indirect Taxes	21.8	21.7	24.9	23.2	25.2	26.2	29.3	27.2	34.0	28.5
Import Duties	11.7	12.4	15.1	12.6	12.3	13.0	13.3	14.3	15.1	15.4
Export Duties	0.0	0.0	0.0	0.0	0.0	0.0	0.0	0.0	0.0	0.0
Other Indirect Taxes	10.1	9.2	9.8	10.7	12.9	13.2	16.1	13.4	19.5	13.8
Property Income	1.1	0.9	0.9	0.1	1.3	1.0	1.0	1.0	0.8	0.9
Interest	0.1	0.1	0.0	0.0	0.0	0.0	0.1	0.0	0.2	0.2
Rent of Land *	1.0	0.8	0.8	0.0	0.9	0.9	0.8	0.7	0.6	0.6
Dividends	0.0	0.0	0.1	0.1	0.4	0.1	0.1	0.2	0.0	0.1
Current Taxes on:	1.3	1.0	1.0	1.7	1.7	1.7	1.6	1.4	1.5	1.3
Income	1.3	0.9	0.9	1.7	1.7	1.6	1.5	1.4	1.4	1.3
Other	0.1	0.0	0.0	0.0	0.1	0.1	0.1	0.0	0.0	0.0
ECCB Profits	0.2	0.2	0.1	0.1	0.1	0.1	0.1	0.0	0.0	0.0
Other Sales and Services*	7.3	5.5	0.7	0.0	0.0	0.0	0.0	0.0	0.0	0.0
Surplus of Departmental Enterprises	-0.2	-0.6	-1.8	-2.2	-1.6	-1.8	-1.4	-1.2	-1.4	0.0
Total Recurrent Revenue	31.7	28.8	25.9	23.3	27.0	27.4	30.7	28.6	35.0	30.8

Data has been revised from 1999 to 2001

Source: Anguilla Statistical Department / ECCB

ANGUILLA
TABLE 18- CURRENT ACCOUNT OF CENTRAL GOVERNMENT EXPENDITURE AS A PERCENTAGE OF GDP

	1998	1999	2000	2001	2002	2003	2004	2005	2006	2007
Personal Emoluments & other benefits	12.3	13.7	14.7	15.4	16.0	15.8	11.5	10.6	10.3	9.5
Pensions & Gratuities	1.0	0.8	0.9	1.0	1.2	1.4	1.2	1.1	1.3	1.0
& Services	12.4	10.4	10.7	11.0	10.6	10.6	14.8	14.5	17.4	16.0
Less Fees and Sales 2	9.1	8.2	3.8	3.2	3.4	3.1	2.2	2.2	2.1	2.4
Government Final Consumption	16.6	16.7	22.6	24.3	24.4	24.7	25.2	23.9	26.9	24.1
Current Transfers To:	1.5	1.2	1.2	0.9	0.8	0.8	0.6	0.7	0.6	0.6
Households	0.9	0.7	0.6	0.6	0.4	0.4	0.2	0.3	0.3	0.4
Non Profit Making Bodies	0.2	0.1	0.1	0.0	0.0	0.0	0.0	0.0	0.0	0.0
Regional Organisations	0.3	0.4	0.5	0.3	0.3	0.3	0.3	0.3	0.2	0.2
International Bodies	0.1	0.0	0.0	0.1	0.0	0.1	0.1	0.0	0.0	0.0
Interest and subsidy	0.8	0.6	0.9	1.0	1.5	1.6	1.1	1.3	1.4	0.0
Total Expenditure	18.9	18.5	24.7	26.2	26.6	27.0	26.9	25.9	28.9	24.8

Data has been revised from 1999 to 2001
Source: Anguilla Statistics Department /
ECCB

ANGUILLA
TABLE 19 - INCOME AND OUTLAY ACCOUNT OF CENTRAL GOVERNMENT AT CURRENT PRICES (EC \$'000)

INCOME	1998	1999	2000	2001	2002	2003	2004	2005	2006	2007
Direct Taxes	270	340	474	701	575	606	613	552	596	682
Indirect Taxes	45,703	50,515	58,149	55,717	61,092	66,229	89,800	97,097	148,103	161,882
Property Income Received	3,838	3,963	4,006	2,594	4,871	4,644	5,152	2,659	3,495	4,442
Interest (Social Security)	1,103	1,503	1,745	2,156	2,383	2,223	2,172	0	0	0
Interest (Current Account)	151	147	81	20	3	21	274	155	883	1,228
Rent of Land	2,071	1,901	1,947	97	2,234	2,217	2,534	2,471	2,611	3,214
ECCB Profits	513	413	233	321	251	184	172	34	0	0
Social Security Contributions	8,725	10,199	11,529	12,018	11,846	12,628	14,114	0	0	0
Current Transfers	2,761	2,216	2,230	4,115	4,134	4,299	4,765	5,020	6,488	7,466
Unfunded Employee Welfare Contributions Imputed	2,053	1,973	2,155	2,438	2,824	3,546	3,552	3,791	5,819	5,761
Withdrawals from Quasi Corporate Enterprises	(448)	(1,336)	(4,216)	(5,351)	(3,887)	(4,551)	(4,243)	(4,290)	(6,179)	228
Current Receipts	62,902	67,870	74,327	72,233	81,456	87,401	113,752	104,829	158,322	180,460
OUTLAY										
Final Consumption Expenditure	34,688	38,868	52,706	58,160	59,054	62,259	77,154	85,073	117,227	137,226
Property Income Paid	1,659	1,462	2,059	2,375	3,634	3,928	3,292	4,755	6,131	164
Subsidies	0	0	0	0	0	0	0	0	0	0
Current Transfers	4,866	4,741	5,576	5,219	5,481	6,185	6,425	5,296	5,611	3,497
Households	1,956	1,571	1,511	1,333	969	885	644	1,194	1,415	2,290
Social Security Benefits	1,762	2,047	2,714	2,994	3,591	4,157	4,521	2,802	3,071	
Other Current Transfers	1,148	1,123	1,350	892	920	1,143	1,261	1,301	1,125	1,206
Unfunded Employee Welfare	2,053	1,973	2,155	2,438	2,824	3,546	3,552	3,791	5,819	5,761
Saving	19,636	20,826	11,831	4,041	10,462	11,483	23,328	5,913	23,533	33,814
Current Disbursements	62,902	67,870	74,327	72,233	81,456	87,401	113,752	104,829	158,322	180,460

* In 2001 hotel closure reduced rent to Government

Data has been revised from 1999-2001

Source: Anguilla Statistics Department
ECCB

ANGUILLA
TABLE 20 - SELECTED ECONOMIC INDICATORS

		1998	1999	2000	2001	2002	2003	2004	2005	2006	2007
CURRENT PRICES											
1. GDP AT FACTOR COST	EC\$M	209.23	232.95	233.51	239.78	242.36	252.42	306.09	356.41	435.60	568.81
2. PER CAPITA GDP AT FACTOR COST	EC\$	19,630.91	21,279.80	20,749.12	20,740.39	20,334.10	20,690.16	24,443.96	26,133.67	30,560.15	38,212.05
3. PER CAPITA GDP IN US\$	US\$	7,324.97	7,940.22	7,742.21	7,738.95	7,587.35	7,720.21	9,120.88	9,751.37	11,403.04	14,258.23
CONSTANT PRICES 1990											
4. GDP AT FACTOR COST	EC\$M	170.46	185.21	184.68	190.76	184.88	190.14	221.39	245.17	290.13	351.05
5. PER CAPITA GDP AT FACTOR COST	EC\$	15,993.62	16,918.79	16,409.80	16,500.31	15,511.38	15,585.57	17,679.93	17,976.96	20,354.34	23,583.32
6. MID-YEAR POPULATION (DE JURE)		10,658	10,947	11,254	11,561	11,919	12,200	12,522	13,638	14,254	14,886
7. VALUE OF EXPORTS (FOB)	EC\$M	9.45	7.09	10.80	8.64	11.73	11.45	15.52	39.81	33.04	24.80
8. VALUE OF IMPORTS (CIF)	EC\$M	216.96	248.08	255.19	209.80	188.71	207.30	276.58	350.59	472.23	669.34
9. BALANCE OF VISIBLE TRADE	EC\$M	(207.51)	(240.99)	(244.39)	(201.16)	(176.98)	(195.85)	(261.06)	(310.79)	(439.19)	(644.54)
10. CONSUMER PRICE INDEX *	% Ch	2.64%	2.62%	6.50%	2.92%	-1.38%	6.94%	5.02%	3.24%	10.44%	3.53%
11. IMPLICIT GDP DEFLATOR	% Ch	0.02	0.02	0.01	(0.01)	0.04	0.01	0.04	0.05	0.03	0.08
12. GOVERNMENT RECURRENT REVENUE *	EC\$M	72.37	74.55	72.40	73.15	84.37	88.55	112.99	122.05	178.32	206.05
13. GOVERNMENT RECURRENT EXPENDITURE*	EC\$M	59.55	69.30	73.80	79.49	81.86	85.65	94.02	106.08	141.7	169.5
14. TOTAL VISITORS	'000	113.80	106.73	112.46	104.97	111.12	109.28	120.79	143.19	167.25	164.07
BY AIR	'000	28.95	28.54	28.57	32.07	29.65	28.33	23.95	32.02	33.45	35.16
BY SEA	'000	84.84	78.19	83.89	72.90	81.46	80.95	96.84	111.17	133.79	128.91
15. EXCURSIONISTS	'000	69.92	59.95	68.68	57.01	67.15	62.36	66.80	81.10	94.28	86.42
16. ELECTRICITY GENERATED	000's Kwh	31,153.00	40,031.00	45,849.00	53,598.00	55,328.00	58,387.93	62,068.85	72,040.75	80,109.82	88,998.92
17.. WATER PRODUCED	Gal.MIL	103.15	141.02	163.80	204.78	202.75	197.07	201.39	229.58	259.63	277.86

+ Consume Price Index is percentage change Nov/Nov 1989-94, Dec/Dec 1995 onwards

* BASED ON THE GOVERNMENT BUDGET CLASSIFICATION AND NOT ON THE U.N. SYSTEM OF NATIONAL ACCOUNTS (SNA) CLASSIFICATION.

Source: Anguilla Statistical Department / ECCB